

Matisse Museum, Nice

Matisse in his walls
Re-hanging of the collection
July 8th 2017 - October 13th 2017

Opening Friday 7th July at 6 :00 p.m



Henri Matisse painting, studio of the cours Saleya, near 1927
Archives Henri Matisse (DR)

Presentation

Matisse in his walls

Re-hanging of the collection

July 8th 2017 - october 13th 2017

Opening Friday 7th July at 6 :00 p.m

For the hundred years of Matisse's arrival in Nice, the museum presents a new hanging that pays tribute to the link between the city and the artist. This new route puts in light the richness of a collection, fruit of successive donations of the artist and his heirs to the city of Nice, which provides a privileged and unique access to the intimacy of his creation.

The museum renews this year with the entrance designed by Jean-François Bodin in 1993, which allows to welcome the public in masterful space deployed around the large paper cut-out *Fleurs et fruits* and the ceramics *La Piscine*, gift of Claude and Barbara Duthuit at the city of Nice in 2013.

The room "Matisse and Nice" tells the anchoring of the artist in his city of preference, his workshops and successive places of life, from the Promenade des Anglais until the Regina, in Cimiez.

The new hanging reveals a work constantly driven by dialogue.

The 'room invited', renewed every three months, will open with Georges Rouault, while the room dedicated to Fauvism will highlight the exchange with Henri Manguin. Dialogue with cultures too, since all along the path the visitor can discover the extra-occidental sources of a deeply humanist creation.

A modernized course of the collections

In the villa, the permanent exhibition space is modernized.

Beyond the works presented, the guideline is to give a strong presence to the artist himself and to the framework of his creation.

The scenography, designed by Jean-Paul Camargo, punctuates the course with an important information content about Henri Matisse's life and work.

The technology "Contactless" allows to listen to the comments on works on your smartphone, while a musical background is in the study, in partnership with the Conservatoire of Nice.

Audiovisual enters the course with screens on which will be broadcast new footage showing the artist at work.

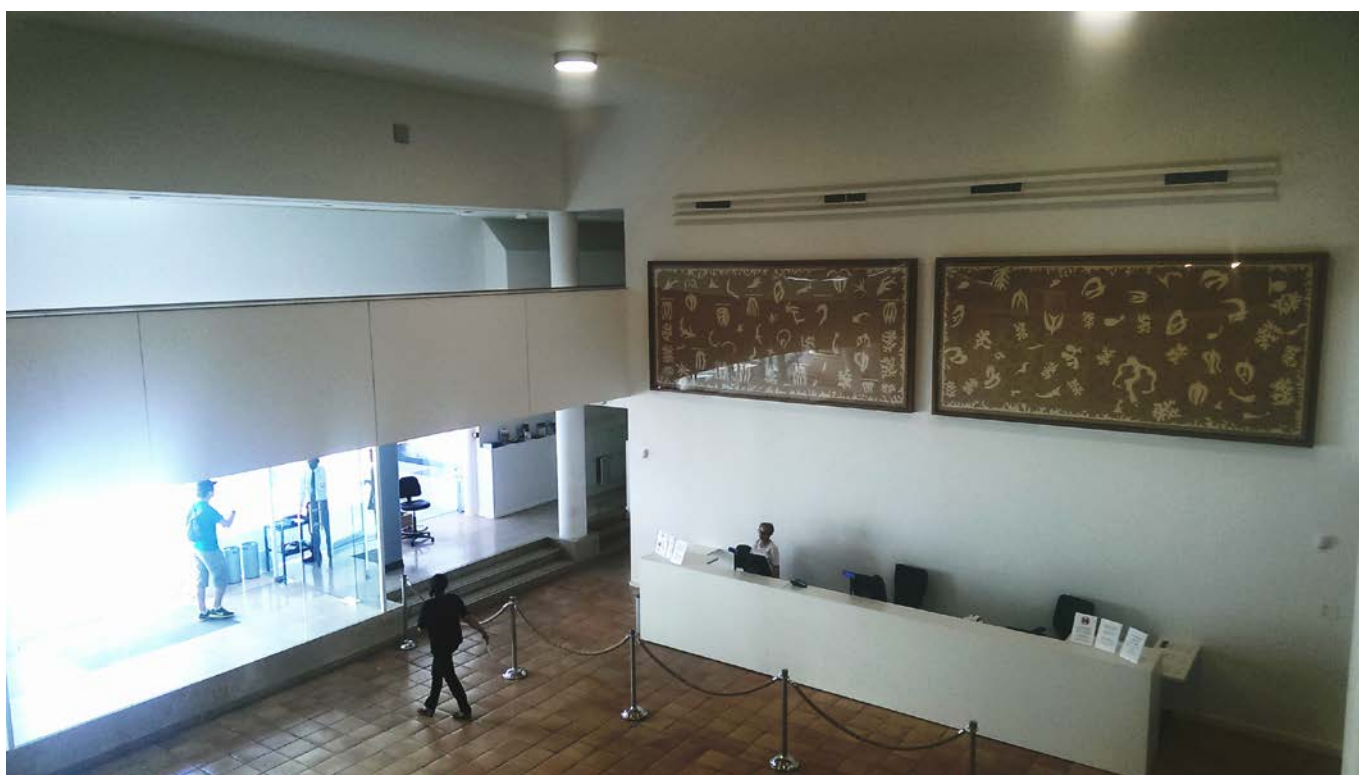
Borders of listening will be subsequently installed broadcasting interviews of the artist, to reach Matisse beyond his works.

This encounter with the artist also through experimentation, the Matisse Museum wishes to integrate his collections journey a room dedicated to practice art, composed of a teaching workshop and an area of independent practice, inviting interactivity.

Un nouvel accueil pour le musée A new reception for the museum

With the re-hanging of the collections, the reception of the museum has been moved and renews with the entrance designed by Jean-François Bodin during the extension work in 1993.

The public now enters the museum by the large exterior stairs, near the 164 avenue des arènes, and no more by the villa; he is welcomed in the masterful space deployed around the large paper cut-out *Fleurs et fruits* and the ceramics *La Piscine*, gift of Claude and Barbara Duthuit at the city of Nice in 2013. The two serigraphies *Océanie, la mer* and *Océanie, le ciel* have been moved in this space, as the sculptures *Dos II* and *Dos III*.



Nouvel accueil du musée Matisse
Partie moderne du musée, niveau -2

Matisse in his walls ***Re-hanging of the collection***

The new hanging of the collection begins with the presentation of the photographic fund in the temporary exhibition space (level -1), with a selection of twenty-six photographs, showing the work of sixteen photographers linked to Matisse.

The permanent collection of the museum remains presented in the villa, original exhibition place of the founding donations by Matisse and his heirs to the opening of the museum in 1963.

The collection is presented according to both thematic (*Dialogues, The studio, Michel-Ange in the harem, The space feeling, Jazz*) and chronological hanging (*Beginnings, Fauvism* and the last creation with *the Chapel of Vence*)

Some news punctuate the course :

- in the room on the fauvism, the long-time loan of Henri Manguin's painting, *Les Chênes-liège (1906)*, Matisse's fauvist friend, completes the collection,
- In the room on the Chapel of Vence, the generous help of the Association des amis has allowed the re-frame and the presentation of two maquets in paper cut-outs of the green robes on the assembly of thirteen in the collection.



Henri Matisse, *Maquette pour la chasuble verte (face)*, 1950-1952
Papiers gouachés, découpés, collés et marouflés sur toile, 126,5 x 198 cm
Musée Matisse Nice. © Succession H. Matisse. Photo : François Fernandez

A room devoted to the link between Matisse and Nice



Matisse sur le balcon de l'appartement de la place Charles-Félix, Nice, vers 1929. Photo : Pierre Matisse.

For the hundred years of his discovery of the city in 1917, the museum dedicates a room, *Matisse in Nice*, to the very strong links between the artist and his city of preference.

The exhibition of photographs and works on the period, from the first stays to his permanent settlement on Cours Saleya and in the Regina at Cimiez, is completed with an documentary and iconographic presentation, showing Matisse's different spaces of life and work and their particular influence on his creation.

A room « guest artist »



Georges Rouault, *Le Modèle, souvenir d'atelier*, 1895 repris vers 1950 ?, Coll. part. via la Fondation Georges Rouault, Paris

Henri Matisse, *Académie d'homme*, 1900, coll. musée Cantini, Marseille
© Succession H. Matisse.

According to the idea of permanent dialogue that Matisse established between sources of inspiration and techniques, the new route collections devotes one of its rooms in a "guest artist", in relation to Matisse. He can be an artist from the past, a contemporary of Matisse or a current artist, as well as a writer, or a practitioner, lithographer, founder...

This dialogue with other creators puts the collection into resonance by a documentary lighting, revealing the richness of the museum fund.

Georges Rouault, who met Matisse at the school of Fine Arts in the workshop of Gustave Moreau at the end of the nineteenth century, inaugurates the series of "guests artists". The room presents works of their learning years and reflects the course of these two artists, considered in the 1930s as the major figures of french modern art. This presentation is completed with documentation, correspondence and photographs of this artistic exchange.

MATISSE MUSEUM

164, Avenue des Arènes de Cimiez. 06000 Nice
T : 04 93 81 08 08 / 04 93 53 40 53 (conservation)
email : musee.matisse@ville-nice.fr
website: www.musee-matisse-nice.org

HORAIRES

11 a.m – 6 p.m : 2.01 au 22.06 & 16.10 au 31.12
10 a.m – 6 p.m : 23.06 au 15.10
Ticket office closes at 5.30 p.m & at 5:00 p.m on 24
31.12 (last entrance at 4.30 p.m).
Open everyday except on Tuesdays and some public
holidays: 1st January, Easter Sunday, 1st May, 25th Dec

TICKETING

- **24 h individual Ticket- 10€** : Access to all municipal museums and galleries for 24 hours
- **7 days individual Ticket - 20€** : Access to all municipal museums and galleries for 7 days
- **Group Ticket - 8€ per person** (from 10 people): Access to all municipal museums and galleries for 24 hours
- **Free tickets** : proof required
Children under age 18 and students, unemployed persons, disabled civilians and war veterans with one accompanying person each, Museum curators, Journalists, Teachers (Pass Education card), Tour Guides

TRANSPORT INFORMATION

Bus : 15, 17, 20, 25. Stop "Arènes / Musée".

ACCESS

- **By foot** : **4 entrances to the Parc des Arènes**:
avenue des Arènes de Cimiez, boulevard de Cimiez,
avenue du Monastère, place du Monastère.
Individuals and groups entrance : Level -2 by the
large stairs of the modern part of the museum

Disabled visitors : The whole museum is accessible (1, -1, -2).

Access : entrance in the Parc des arènes by the gate at 164 avenue des arènes or the gate on boulevard de Cimiez, then entrance to the museum by the South courtyard of the red Villa, besides the archeological site.

VISITS

English – Italian - German

Information : 0033 (0)4 93 53 40 53

Guided tour for individuals

6€ + *entrance of the museum*
Monday and Friday afternoon, according to the guide's disponibilities.

Guided tour for groups

82€ adults / 20 € students from 13 to 20 persons.
Necessary reservation for all group visits, free or guided: musee.matisse@ville-nice.fr

Workshop

8 € per person
inscription : sylvie.garet@ville-nice.fr

for children

- Wednesday afternoon, 5 sessions of 1 h 30:
40 €

- Holidays : stage of 4 sessions (Monday, Wednesday, Thursday, Friday): 32 €.

for adults

Session "Discover the artist's techniques" according programmation
Please look at www.musee-matisse-nice.org

Visiting in family

6 € per adult + *entrance of the museum*
Wednesday, 14 h - 16 h
Interactiv visit of the collections for the families with a short workshop.
inscription : sylvie.garet@ville-nice.fr

Programmation and more information on the website of the museum :

www.musee-matisse-nice.org

To obtain information or invitation, you may write to the museum by email or by post.